



Crozet Plaza and Wayfinding Signage



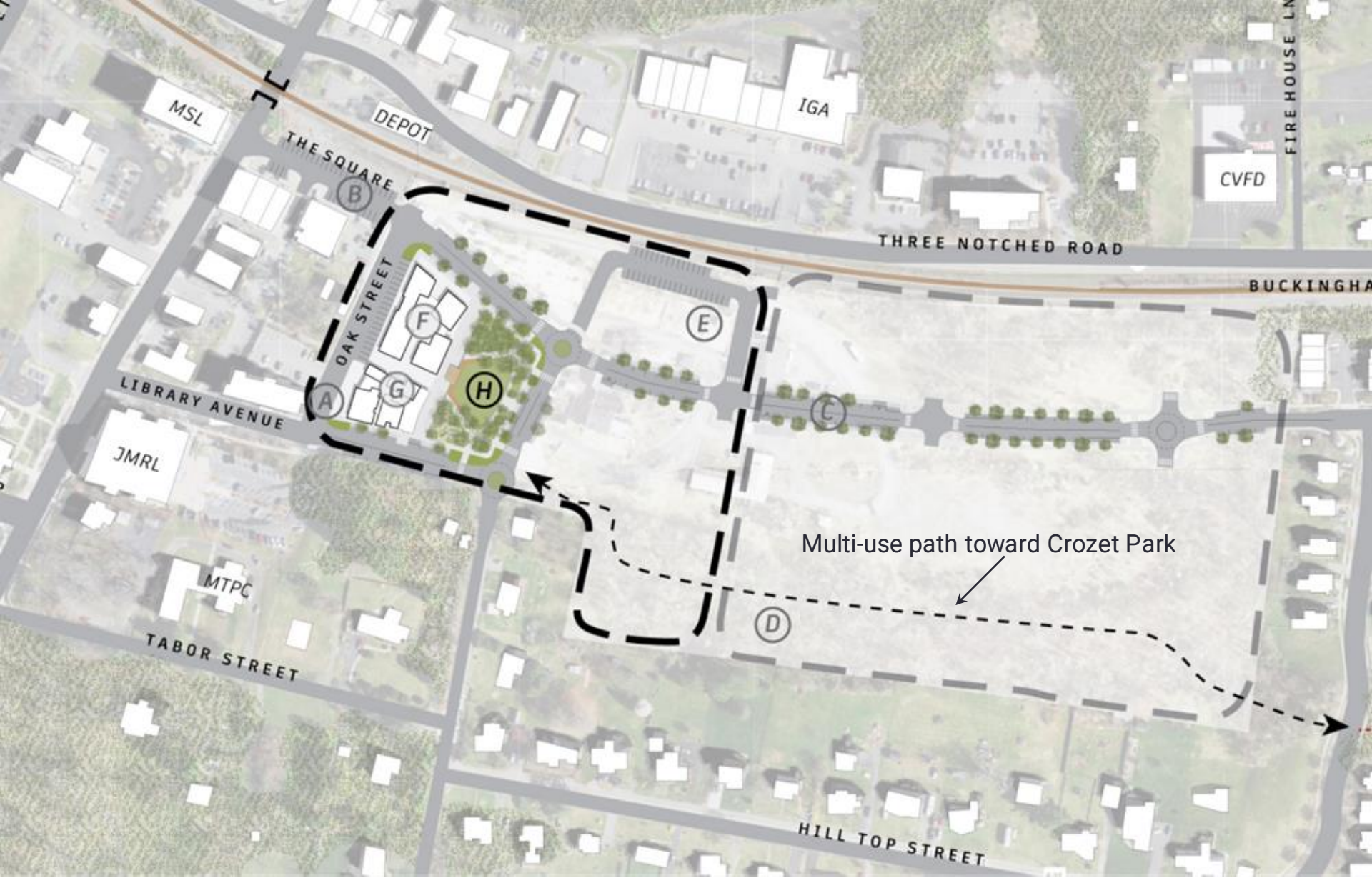
The Crozet Plaza



**Barnes Lumber Property
Current Conditions**



Oak Street/The Square Improvements
COMPLETED 2025



Barnes Lumber Property Phase 1 Development



THE SQUARE

B.B.R.R.

THREE NOTCHED ROAD

AVENUE

OAK STREET

HOTEL

MIX
USE
BLDG

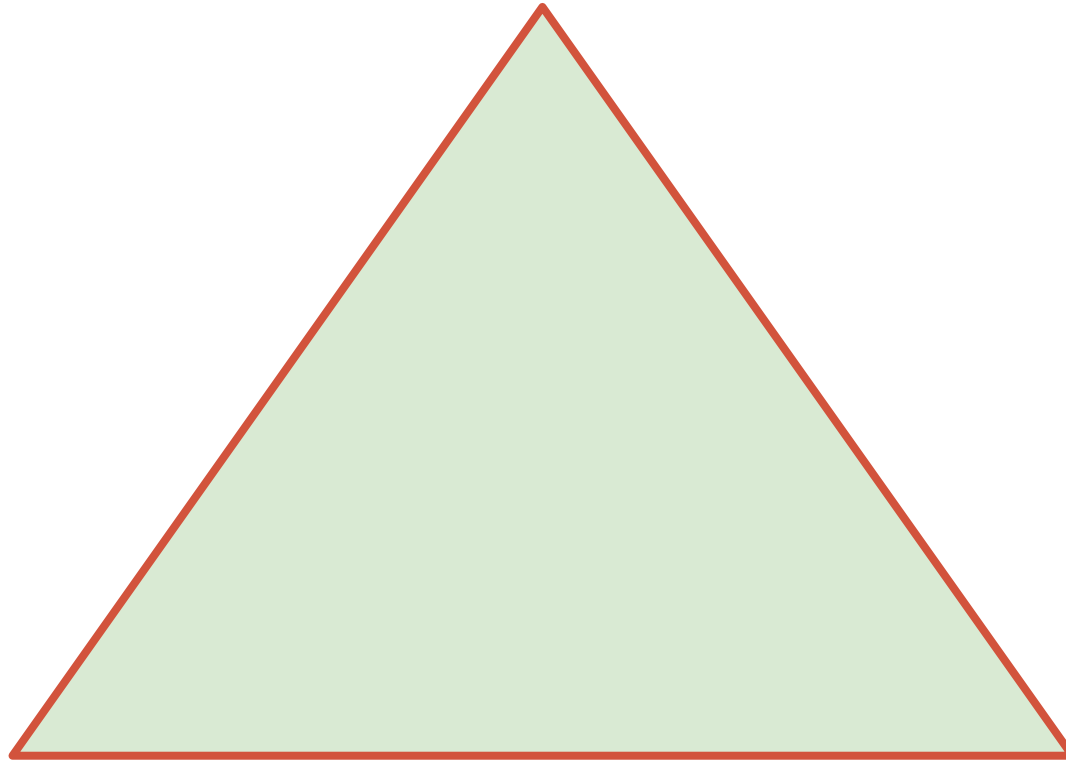
CROZET
PLAZA

HIGH STREET

BRARY AVENUE

Downtown Crozet Initiative (DCI)

\$1.5 million for furniture & fixtures;
manage and program the Plaza



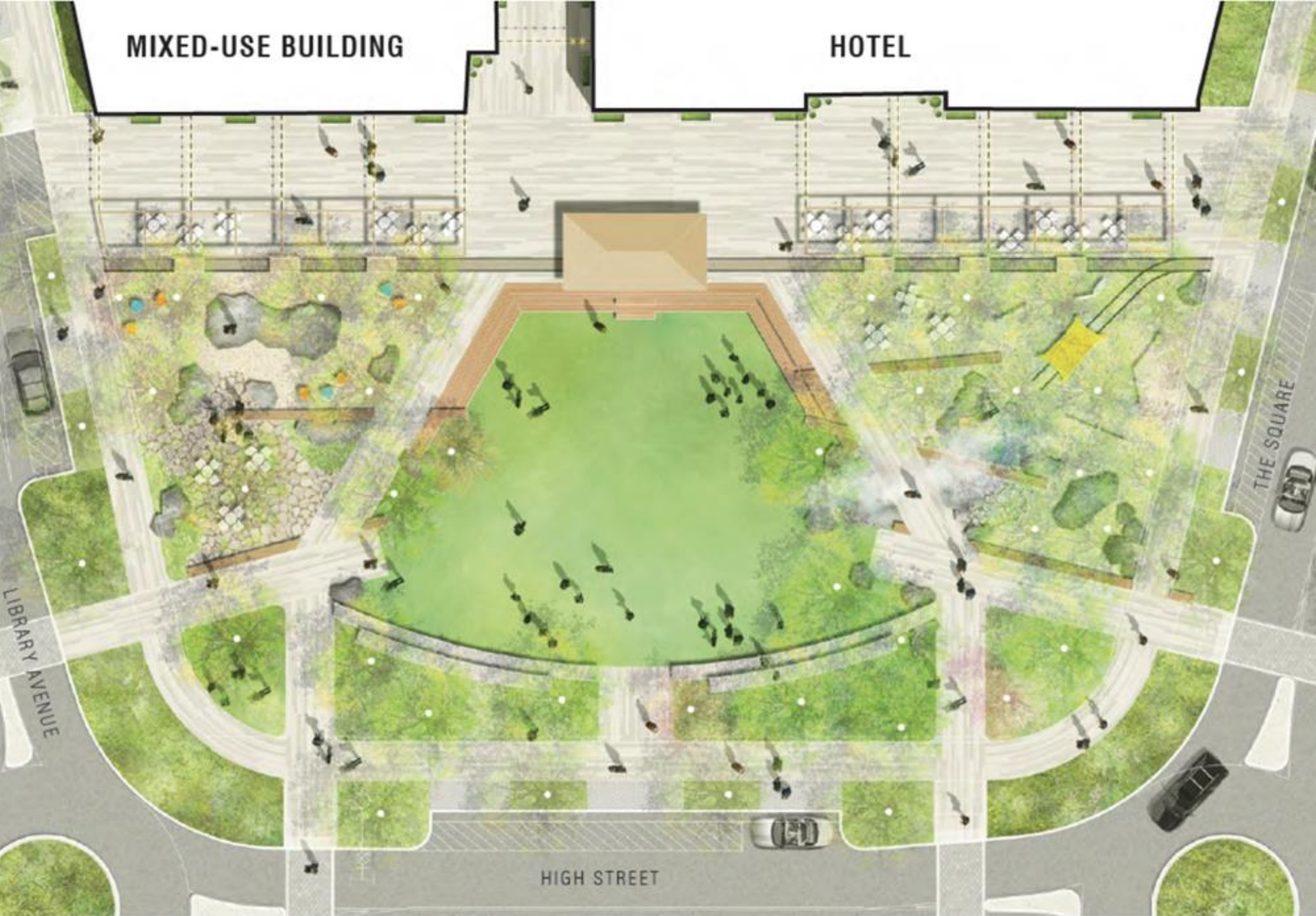
Albemarle County

CNTA/Milestone Partners



MIXED-USE BUILDING

HOTEL



Crozet Plaza

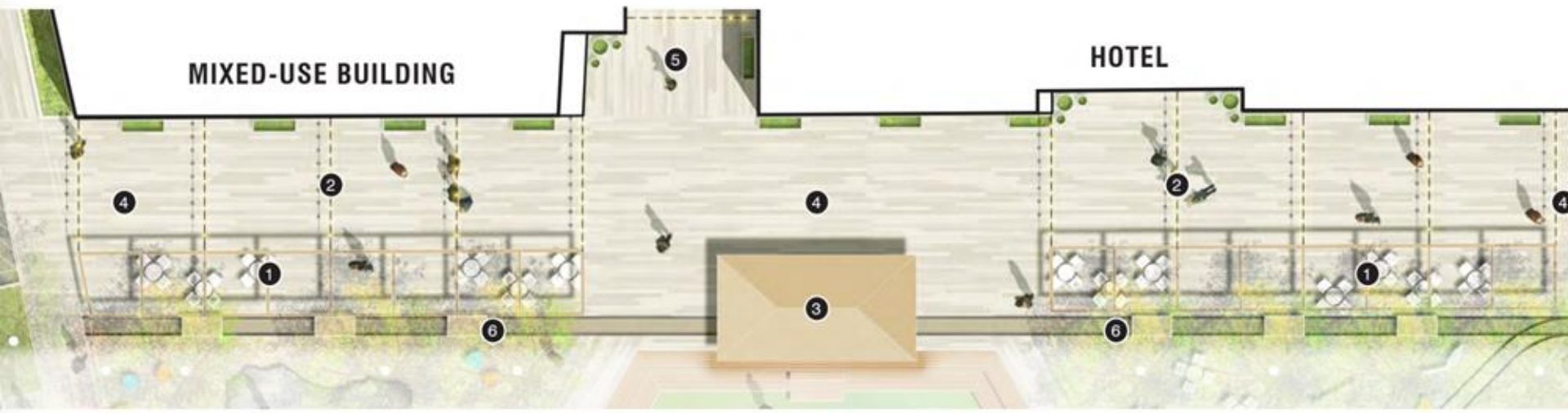
“BARNES LUMBER” PAVILION + CONCERT LAWN

KEY PLAN

- 1 Sloped Lawn Panel
- 2 Multi-Use Pavilion/Stage
- 3 Tiered Timber Seatwalls
- 4 Boulder Outcroppings
- 5 Tiered Stone Seatwalls



RAILROAD PROMENADE



KEY PLAN

- 1 Pergola + Flexible Seating
- 2 Festoon Lighting
- 3 "Depot" Pavilion
- 4 Promenade
- 5 Pedestrian Mews to Oak Street
- 6 Embedded Railroad Tracks + Timber Platform Seating



ORCHARD GROVE + ROCKFISH GAP PLAY AREA

KEY PLAN

- 1 Stone Dust Pavement + Shade Trees
- 2 Flexible Seating
- 3 Heavy Timber Benches
- 4 Misting + Splash Play
- 5 Boulder Outcroppings
- 6 Train Tunnel Play
- 7 Nature Play Area
- 8 Embedded Railroad Tracks



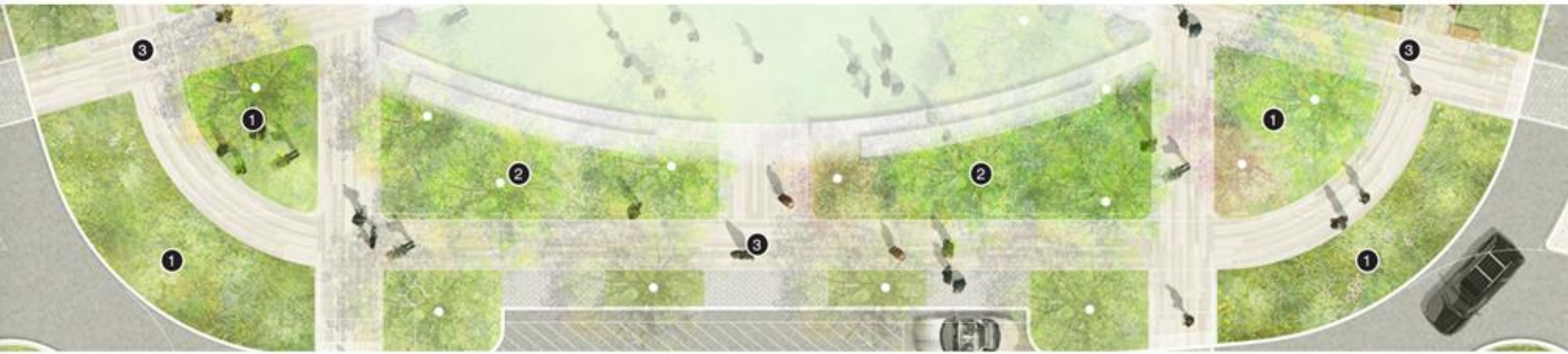
ORCHARD GROVE + BOULDERING AREA

KEY PLAN

- 1 Bouldering Area
- 2 Flexible Seating + Specimen Tree
- 3 Heavy Timber Benches
- 4 Adirondak Chairs
- 5 Boulder Outcroppings



BLUE RIDGE PLANTINGS



KEY PLAN

- 1 Blue Ridge Inspired Plantings
- 2 Bermed Plantings
- 3 Streetscape



Next Steps

- **Finalize agreement with County**
- **Launch capital campaign public phase**
- **Construction**
 - Road network construction
 - Phase 1 building construction
 - Plaza construction
- **Complete wayfinding signage plan**

Wayfinding signage
